

Ethernet connection (Pebble4-Dualys3-Securion)

- Compatible with **Internet protocol & IPV4**.
- IP address can be set **manually** or by using a **DHCP** server.
- Hostname is automatically set to **EVO_NNN_XXXXXXX**:

EVO for **Evolis**

NNN depends of the printer model (**SE1** for Securion, **PV4** for Pebble 4, **DV**

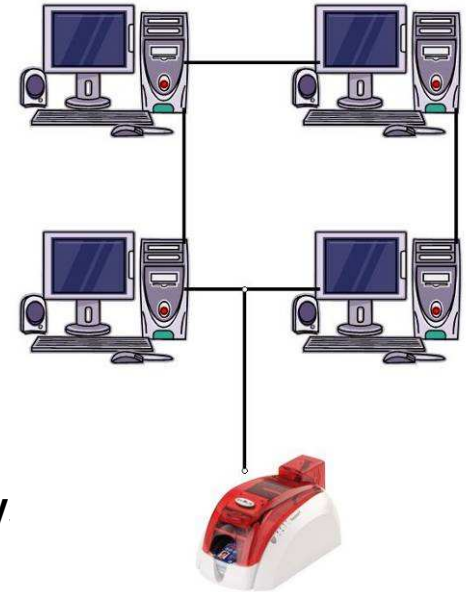
XXXXXXX is the production number.

→ **EVO_SE1_0001234** for s/n **Z710001234** (this hostname can be also set manually)

IMPORTANT: Only the printing and magnetic data can be sent trough the Ethernet port, not for the smart/contactless encoding data.

For the models a print server can be also connected to the printer via the LPT port (if available):

- **D-link dp-301P+**
- **Axis 5400+**



Ethernet commands (Pebble4-Dualys3-Securion)

Pip;Val

Val: IP address to set or **dhcp** to enable this option

Rip Read the IP address

Pehn;Val

Val: Ethernet host name(16 characters max)

Rehn Read the Ethernet host name

Penm;Val

Val: Ethernet subnet mask to set (Not for DHCP)

Renm Read Subnet mask

Pegw;Val

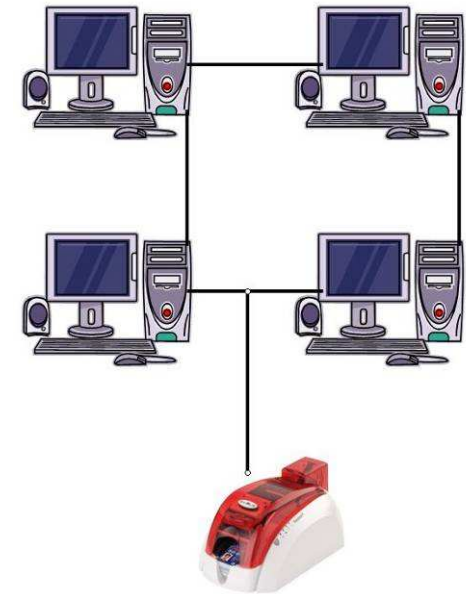
Val: Ethernet gateway address to set. (Not for DHCP)

Regw Read Gateway address

Pews;Val

Val: Ethernet WINS server IP address to set. (Not for DHCP)

Rews Read WINS address

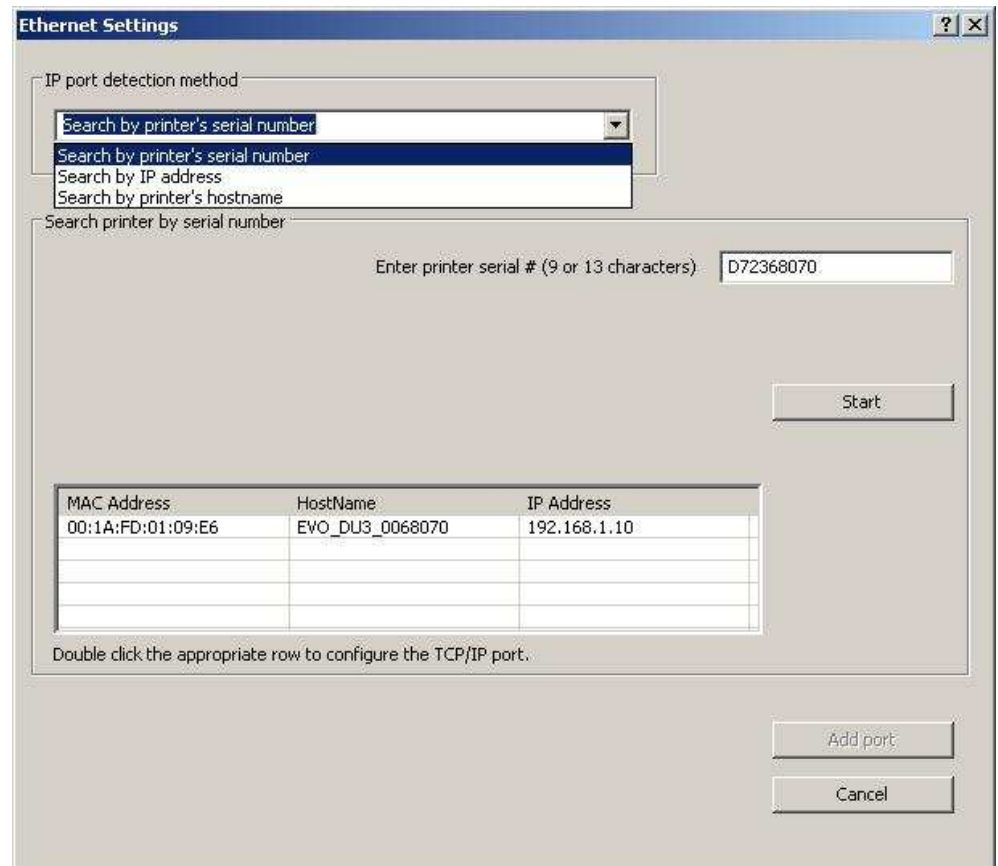


Ethernet connection (Pebble4-Dualys3-Securion)

Installation via the Evolis setup:

With the Evolis Ethernet setup wizard, the Printer that should be already connected to the network can be found by searching its serial number, its IP address or directly with its host name.

You can find the information about Mac and IP address settings by printing the Technical card (with **St** command or from the driver properties).



Ethernet connection (Pebble4-Dualys3-Securion)

Microsoft Internet Explorer window titled "Evolis TCP/IP - Microsoft Internet Explorer". The address bar shows "http://192.168.1.132/". The page content includes the Evolis logo and navigation links: [Main Page](#), [Printer Status](#), [About us](#). The "PRINTER INFORMATION" section contains the following fields:

- Printer model :
- Printer s/n :
- Firmware # :
- Head Kit # :

The "ETHERNET" section contains the following fields:

- Hostname :
- Mac address :
- IP address : . . .
- DHCP :

© Evolis Card Printers 2007. All Rights Reserved

By sending **http://IP_OF_PRINTER**, you can access to the printer's information and modify the IP address or/and the DHCP option.